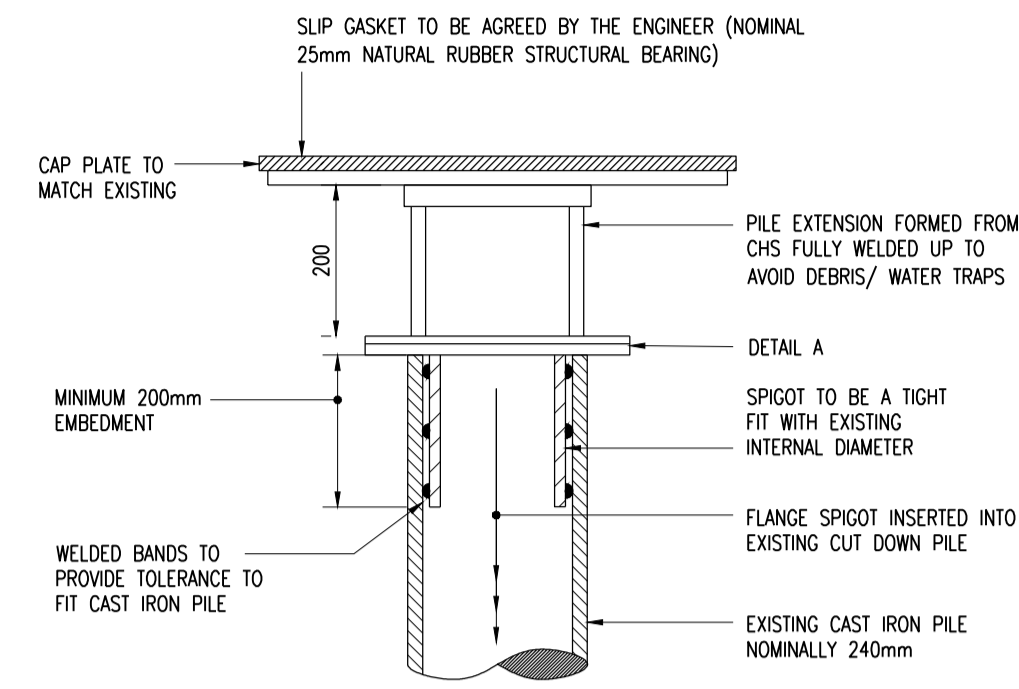


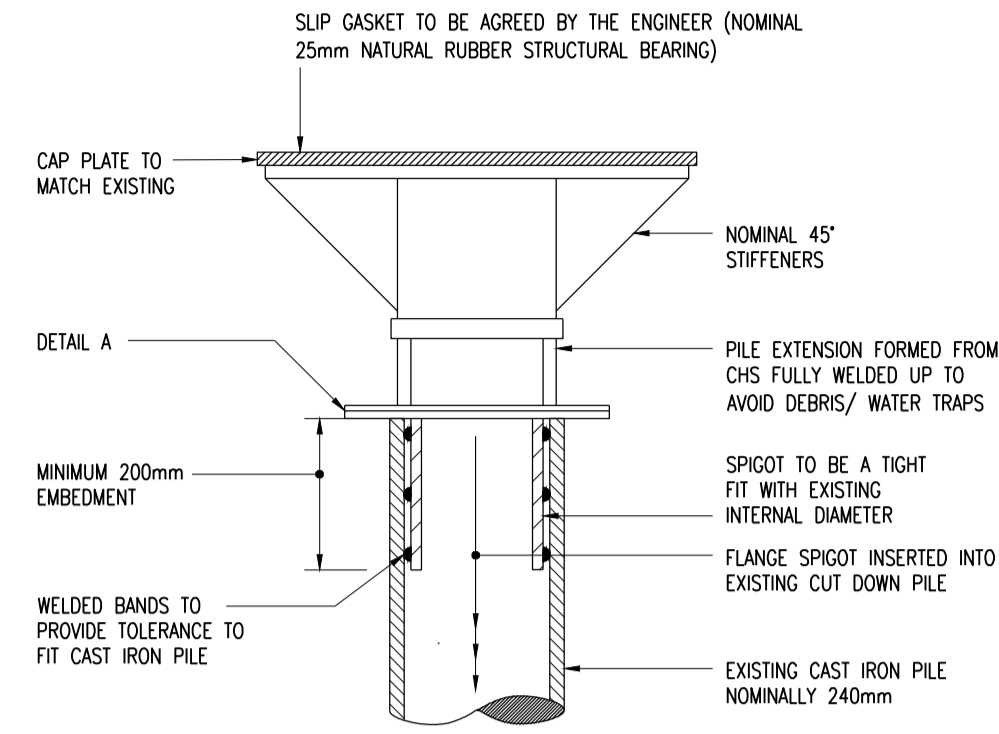
100mm
50mm
0mm

NOTES.

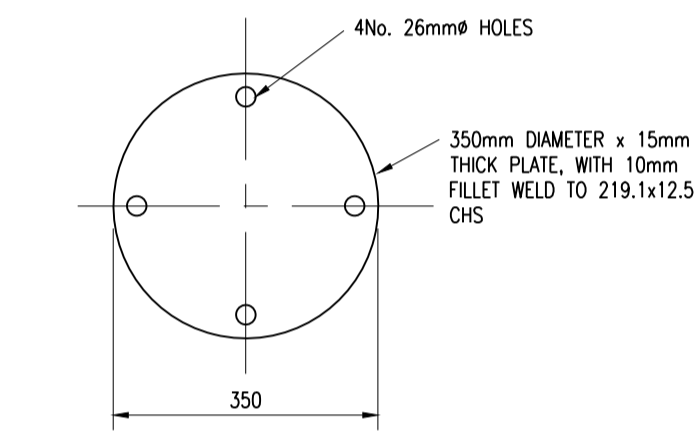
1. GENERAL
- (i) This drawing is not to be scaled, work to figured dimensions only, confirmed on site.
 - (ii) This drawing is to be read in conjunction with all relevant architectural drawings, detailed specifications where applicable and all associated drawings in this series.
 - (iii) Any discrepancy on this drawing is to be reported immediately to the partnership for clarification.
 - (iv) The contractor is responsible for all temporary works and for the stability of the works in progress.



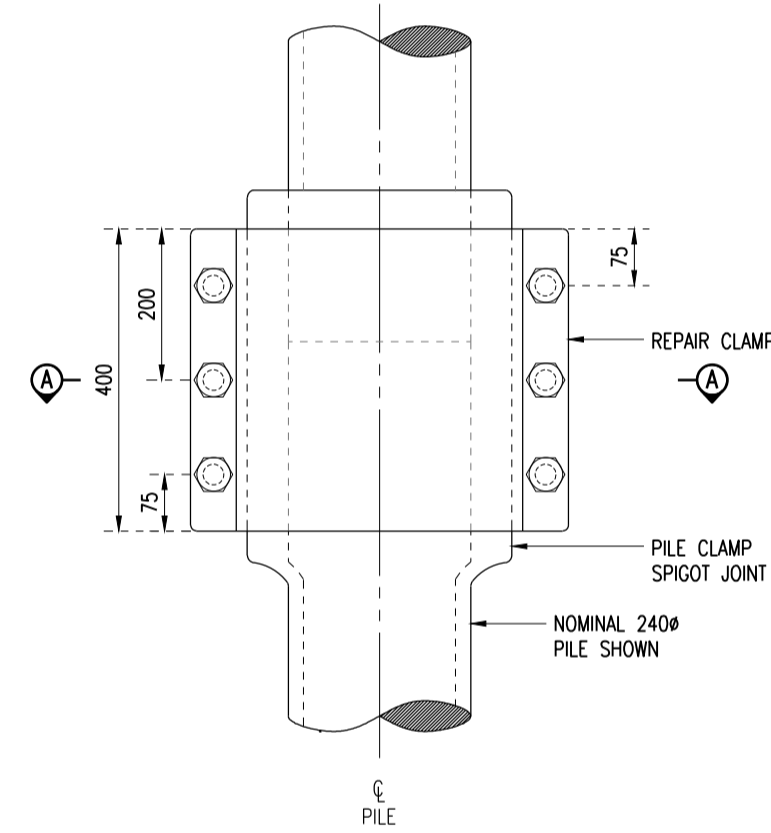
PILE CAP REPLACEMENT DETAIL
(AT GRIDLINE 41/4)
(1:10)



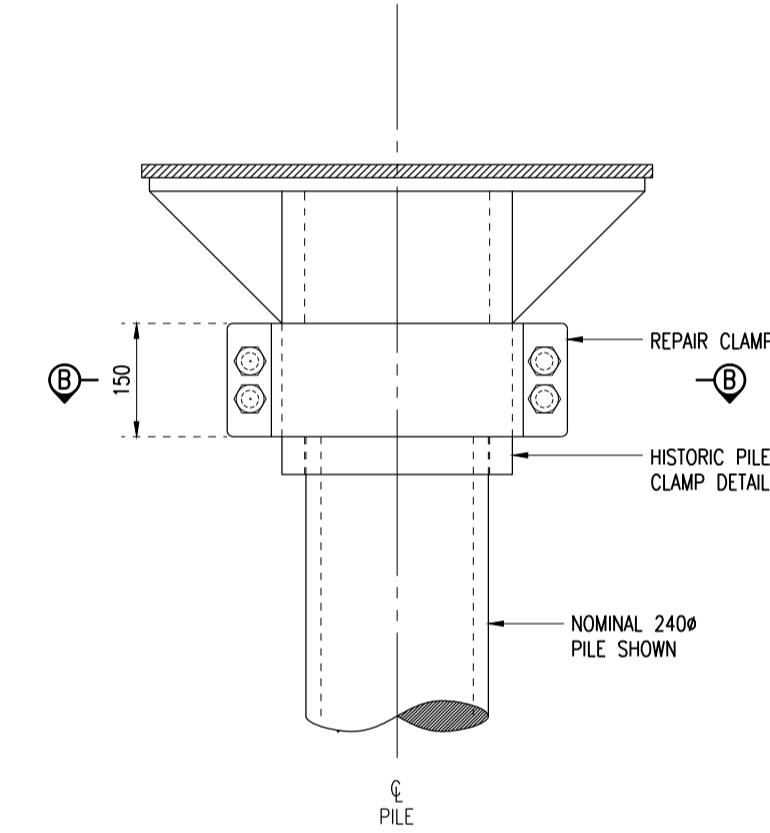
TYPICAL PILE CAP REPLACEMENT DETAIL
(1:10)



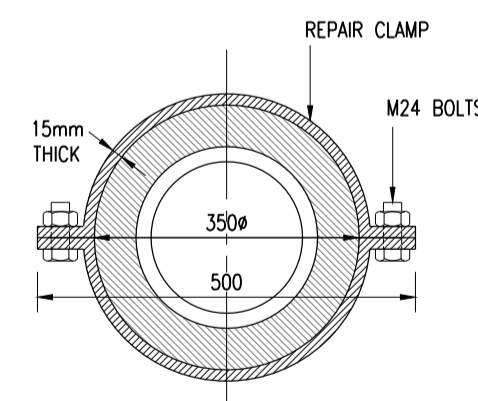
DETAIL A
NEW PILE CAP BASE-PLATE
(1:10)



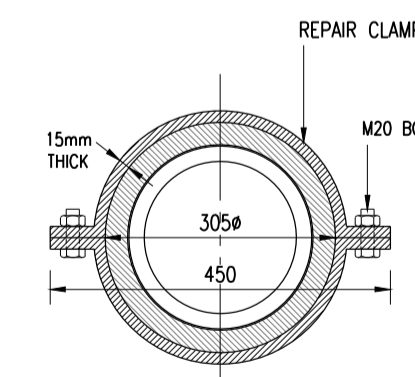
CLAMP CONNECTION DETAIL
(PILE 194/5)
(1:10)



CLAMP CONNECTION DETAIL
(PILES 211/4 ; 24/1 & 24/-1)
(1:10)



SECTION A-A
(1:10)



SECTION B-B
(1:10)

HOP
HEMSLEY ORRELL PARTNERSHIP
CONSULTING CIVIL & STRUCTURAL ENGINEERS

ISSUED FOR INFORMATION

ISSUED FOR INFORMATION		10.04.2017	L.R.S	-
Revision		Date	By	Rev. No.
Client SOUTHEND-ON-SEA BOROUGH COUNCIL				
Project SOUTHEND PIER RETROSPECTIVE L.B.C APPLICATION				
Title REPAIR DETAILS				

HOP
HEMSLEY ORRELL PARTNERSHIP
CONSULTING CIVIL & STRUCTURAL ENGINEERS
HOP House, 41 Church Road, Hove BN3 2BE
Tel : +44 (0)1273 223900
E-Mail : engineers@hop.uk.com
www.hop.uk.com

Scales	Date	Drawn	Engineer	Checked	Approved	HOP Contact
1:200 U.N.O	03/17	L.R.S	N.P.C	N.P.C	-	N.CHASTON
Project No.	Task No.	Dwg. No.	Rev. No.			
12211	23	LBCA04	-			